

Snellman

Sotheby's

INTERNATIONAL REALTY



# Remmarholmen

150 m<sup>2</sup> / 230 m<sup>2</sup> | 2,014 ha | Porkkala

+358 (0)40 533 5533 | [soile@sothebysrealty.fi](mailto:soile@sothebysrealty.fi) | [www.sothebysrealty.fi](http://www.sothebysrealty.fi)

# Remmarholmen, 02480 Kirkkonummi

Cottage or villa | 150 m<sup>2</sup> / 230 m<sup>2</sup> | 2,014 ha | No energy certificate is required by law | Porkkala

Main building: 2-3 rooms, open kitchen, bathroom, 2 toilets, utility room, hall

Side building: open kitchen, living room, beach sauna and room, storage

## 3 450 000 €

Sales price



Snellman | Sotheby's  
INTERNATIONAL REALTY

# The beauty of the archipelago, the tranquility of your own island and stylish holiday accommodation a short distance from the mainland!

---

Have you dreamed of your own island? Of an island where timelessly stylish buildings would be ready for you and your friends. An island where you can find a sheltered place in all wind directions. An island where you can spend your free time peacefully all year round.

Remmarholmen island located outside Porkkala represents all this and much more!

The buildings are designed by architect Joanna Maury; the main house, the guest house and the sauna all have an atmosphere that lends itself to being close to nature, with wonderful little details. The materials used in the interior - granite, glass, oak and rusted Corten steel create a harmonious and luxurious feel throughout the different buildings. The passage from one building to another is made easy with wooden paths made of durable Siberian larch. The large terraces around the buildings offer a quiet place regardless of wind direction. A separate storage building for hobby equipment and supplies and the sturdy jetty where you can even land by helicopter are the perfect addition to this awe-inspiring island property.

And if the interior design and details that facilitate island living and feeling are carefully thought out in this destination, so are the property's technical solutions. Geothermal energy, a desalination system to obtain drinking water from seawater and a wastewater system that meets today's requirements are all thoroughly thought out and implemented. An outdoor shower, gas fireplace, motorised sunshades, lighting solutions designed with harmony and furniture made on site also contribute to the enjoyment of comfortable living.

The sun glitters over the open sea, coastal cliffs, small archipelago pines. An architectural masterpiece right next to this breathtakingly beautiful environment. Living with nature while today's technical solutions make life easier. Total peace, horizon, time, and space for your own thoughts. Remmarholmen offers all of this and only 5 minutes away from the mainland.

**If you feel this wonderful private island is yours, please get in touch. See you soon!**

---

**Soile Goodall**

Senior Broker, LKV

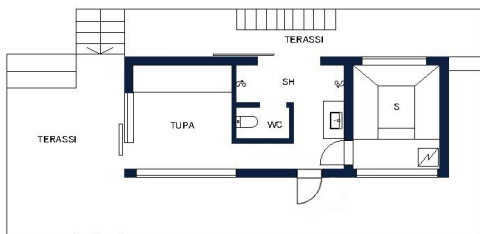
+358 (0)40 533 5533

soile@sothebysrealty.fi

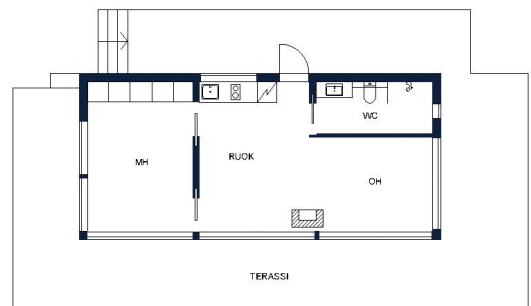


# Floor plan

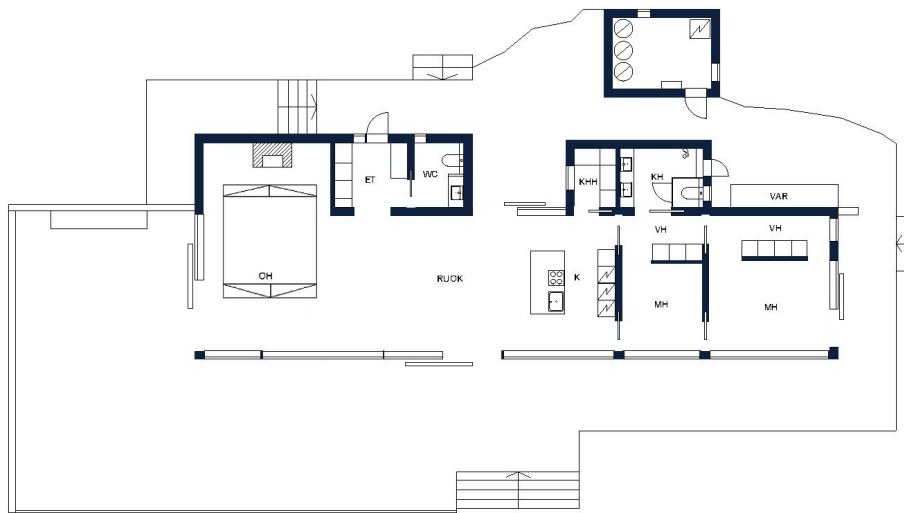
---



SAUNA



VIERASMAJA



PÄÄRAKENNUS



































# Remmarholmen, 02480 Kirkkonummi

Cottage or villa | 150 m<sup>2</sup> / 230 m<sup>2</sup> | 2,014 ha | No energy certificate is required by law | Porkkala

Main building: 2-3 rooms, open kitchen, bathroom, 2 toilets, utility room, hall

Side building: open kitchen, living room, beach sauna and room, storage

## 3 450 000 €

Sales price



Snellman

Sotheby's  
INTERNATIONAL REALTY

# Your International Real Estate Agent Locally

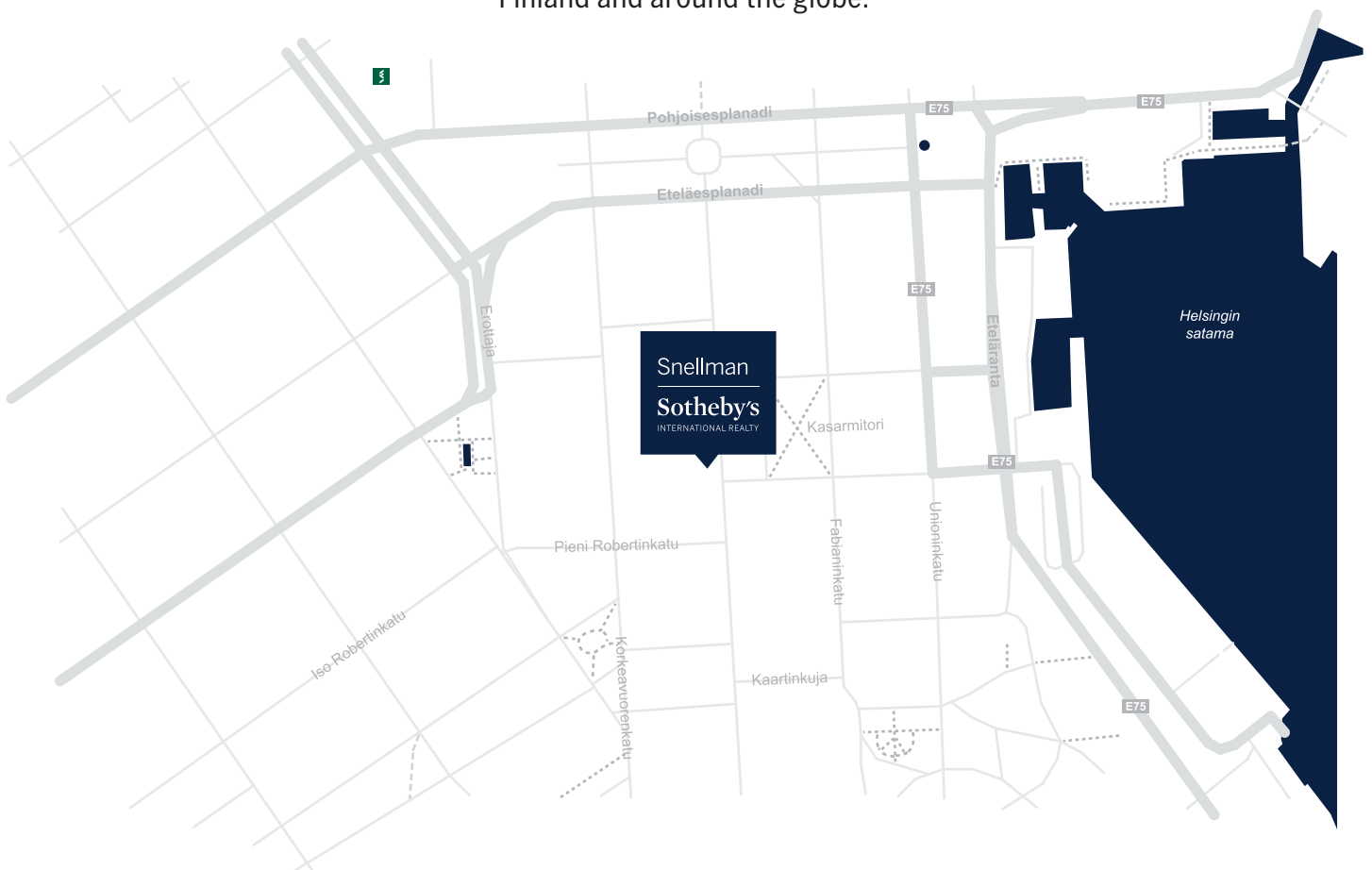
## Snellman Sotheby's International Realty

Snellman Sotheby's International Realty Finland is part of one of the world's largest real estate brokerage chains. We are one of the very few brokerages specializing in high-end real estate, empowering us to share and show the best listings both in Finland and around the world in any given market segment.

## Sotheby's ja Sotheby's International Realty®

The history of Sotheby's International Realty dates to 1744 when the traditional Sotheby's auction house was founded. Alongside it, a real estate brokerage was established in 1976, with the ambition to serve quality-conscious customers equally strong and with the same service level than in art and antiquities auctions.

Today, our global reach includes 84 countries, with a strength of 1 100 offices and 26 100 brokers. We are inspired by interesting and unique listings both in Finland and around the globe.



Kasarmikatu 34, 00130 Helsinki | + 358 (0)10 315 6900 | [info@sothebysrealty.fi](mailto:info@sothebysrealty.fi)

[www.sothebysrealty.fi](http://www.sothebysrealty.fi)



## Soile Goodall

Senior Broker, LKV

+358 (0)40 533 5533

soile@sothebysrealty.fi

Snellman Sotheby's International Realty  
Kasarmikatu 34, 00130 Helsinki  
[www.sothebysrealty.fi](http://www.sothebysrealty.fi)